



# SARS-CoV-2 (COVID-19) –2020

Stockholm, 27 September 2020

**Disclaimer:** *These tables, histograms, maps and graphs are based on the available information at the time of publication, originating from several sources. Data completeness depends on the availability of information from the affected areas. All data should be interpreted with caution as the outbreak is evolving rapidly. In addition, due to the unavailability of date-of-onset data and different testing policies per country, these figures might not be reflective of the evolution of the epidemic.*

## Distribution of COVID-19 cases in accordance with the applied case definitions in the affected countries by country, Africa, as of 27 September 2020



Places reporting cases	Sum of Cases	Sum of Deaths
<b>Africa</b>		
Algeria	50 914	1 711
Angola	4 590	167
Benin	2 325	40
Botswana	2 921	16
Burkina_Faso	1 973	56
Burundi	485	1
Cameroon	20 735	418
Cape_Verde	5 701	56
Central_African_Republic	4 806	62
Chad	1 177	83
Comoros	478	7
Congo	5 008	89
Cote_dIvoire	19 600	120
Democratic_Republic_of_the_Congo	10 592	270
Djibouti	5 409	61
Egypt	102 736	5 869
Equatorial_Guinea	5 028	83
Eritrea	375	0
Eswatini	5 419	108
Ethiopia	72 700	1 165
Gabon	8 728	54
Gambia	3 555	110
Ghana	46 222	299
Guinea	10 548	66
Guinea_Bissau	2 324	39
Kenya	37 871	689
Lesotho	1 558	35

Liberia	1 338	82
Libya	31 828	499
Madagascar	16 257	229
Malawi	5 763	179
Mali	3 080	130
Mauritania	7 457	161
Mauritius	367	10
Morocco	115 241	2 041
Mozambique	7 757	54
Namibia	10 918	120
Niger	1 194	69
Nigeria	58 198	1 106
Rwanda	4 811	29
Sao_Tome_and_Principe	911	15
Senegal	14 869	306
Seychelles	143	0
Sierra_Leone	2 208	72
Somalia	3 588	99
South_Africa	669 498	16 376
South_Sudan	2 676	49
Sudan	13 606	836
Togo	1 736	46
Tunisia	15 178	207
Uganda	7 364	71
United_Republic_of_Tanzania	509	21
Western_Sahara	766	1
Zambia	14 612	332
Zimbabwe	7 803	227
<b>Total</b>	<b>1 453 454</b>	<b>35 041</b>

## Distribution of COVID-19 cases in accordance with the applied case definitions in the affected countries by country, Asia, as of 27 September 2020



Places reporting cases	Sum of Cases	Sum of Deaths
<b>Asia</b>		
Afghanistan	39 227	1 453
Bahrain	68 190	236
Bangladesh	357 873	5 129
Bhutan	271	0
Brunei_Darussalam	146	3
Cambodia	276	0
China	90 456	4 739
India	5 992 532	94 503
Indonesia	271 339	10 308
Iran	443 086	25 394
Iraq	345 969	8 935
Israel	227 100	1 441
Japan	81 690	1 545
Jordan	8 061	43
Kazakhstan	140 175	2 048
Kuwait	103 199	597
Kyrgyzstan	46 251	1 063
Laos	23	0
Lebanon	35 242	340
Malaysia	10 769	133
Maldives	10 045	34

Mongolia	313	0
Myanmar	9 991	198
Nepal	71 821	467
Oman	95 907	885
Pakistan	310 275	6 457
Palestine	48 572	334
Philippines	301 256	5 284
Qatar	124 850	214
Saudi_Arabia	332 790	4 655
Singapore	57 685	27
South_Korea	23 611	401
Sri_Lanka	3 349	13
Syria	4 038	188
Taiwan	510	7
Tajikistan	9 605	75
Thailand	3 523	59
Timor_Leste	27	0
Turkey	312 966	7 929
United_Arab_Emirates	90 618	411
Uzbekistan	54 953	454
Vietnam	1 069	35
Yemen	2 033	588
<b>Total</b>	<b>10 131 682</b>	<b>186 625</b>

## Distribution of COVID-19 cases\* in accordance with the applied case definitions in the affected countries by country, Europe, as of 27 September 2020



Places reporting cases	IT Sum of Cases	Sum of Deaths
<b>Europe</b>		
Albania	13 153	375
Andorra	1 836	53
Armenia	49 072	948
Austria	42 940	787
Azerbaijan	39 895	585
Belarus	77 289	813
Belgium	112 709	9 974
Bosnia_and_Herzegovina	26 795	808
Bulgaria	19 997	789
Croatia	16 007	269
Cyprus	1 684	22
Czechia	63 294	591
Denmark	26 213	648
Estonia	3 165	64
Faroe_Islands	460	0
Finland	9 577	343
France	527 446	31 700
Georgia	5 254	28
Germany	284 140	9 457
Gibraltar	372	0
Greece	17 228	376
Guernsey	256	13
Holy_See	12	0
Hungary	24 014	736
Iceland	2 601	10
Ireland	34 560	1 802
Isle_of_Man	340	24

Italy	308 104	35 818
Jersey	400	32
Kosovo	15 425	619
Latvia	1 654	36
Liechtenstein	117	1
Lithuania	4 295	89
Luxembourg	8 311	124
Malta	2 929	29
Moldova	50 534	1 279
Monaco	210	1
Montenegro	10 197	158
Netherlands	108 521	6 357
North_Macedonia	17 483	722
Norway	13 406	270
Poland	85 980	2 424
Portugal	72 939	1 944
Romania	121 235	4 687
Russia	1 143 571	20 225
San_Marino	746	42
Serbia	33 312	746
Slovakia	8 600	44
Slovenia	5 191	136
Spain	716 481	31 232
Sweden	90 923	5 880
Switzerland	51 864	1 778
Ukraine	195 504	3 903
United_Kingdom	429 277	41 971
<b>Total</b>	<b>4 897 518</b>	<b>221 762</b>

\*Spain: Since 11 May, the frequency of reporting from regional level to national level has **changed**. This may lead to possible discrepancies in cases and death numbers due to data validation. This discrepancy could persist for several days. The cases reported in this table for Spain include cases from the previous 7 days with available data at the time of data collection. On 12 August 2020, Spain retro corrected the cumulative number of deaths leading to a negative increase of deaths.

\*Sweden: from end of August 2020, Swedish authorities are performing daily data consolidation leading to data retro-corrections. From week 38, the Swedish Public Health Agency will update COVID-19 daily data four times per week on Tuesday–Friday. This can result in a decrease of cumulative figures (cases or deaths) and related outputs.

## Distribution of laboratory-confirmed cases\*\*\* of COVID-19 by country in EU/EEA, and the UK as of 27 September 2020



Country	Cases	Deaths	Cases between 21-09-2020 and 27-09-2020	Cases between 14-09-2020 and 20-09-2020	Difference between two periods (%)
Austria	42 940	787	4 992	4 997	- 0.1%
Belgium	112 709	9 974	8 715	9 692	- 10%
Bulgaria	19 997	789	1 178	928	+ 26.9%
Croatia	16 007	269	1 282	1 357	- 5.5%
Cyprus	1 684	22	104	57	+ 82.5%
Czechia	63 294	591	14 988	12 905	+ 16.1%
Denmark	26 213	648	4 366	2 631	+ 65.9%
Estonia	3 165	64	290	220	+ 31.8%
Finland	9 577	343	655	410	+ 59.8%
France	527 446	31 700	85 252	68 283	+ 24.9%
Germany	284 140	9 457	12 725	11 987	+ 6.2%
Greece	17 228	376	2 250	1 942	+ 15.9%
Hungary	24 014	736	6 024	6 165	- 2.3%
Iceland	2 601	10	294	145	+ 102.8%
Ireland	34 560	1 002	2 022	1 808	+ 11.8%
Italy	308 104	35 818	11 535	10 272	+ 12.3%
Latvia	1 654	36	139	51	+ 172.5%
Liechtenstein	117	1	5	3	+ 66.7%
Lithuania	4 295	89	631	368	+ 71.5%
Luxembourg	8 311	124	593	559	+ 6.1%
Malta	2 929	29	230	424	- 45.8%
Netherlands	108 521	6 357	16 680	10 904	+ 53%
Norway	13 406	270	761	779	- 2.3%
Poland	85 980	2 424	7 650	4 680	+ 63.5%
Portugal	72 939	1 944	4 914	4 715	+ 4.2%
Romania	121 235	4 687	9 685	9 164	+ 5.7%
Slovakia	8 600	44	2 054	1 093	+ 87.9%
Slovenia	5 191	136	882	706	+ 24.9%
Spain	716 481	31 232	76 441	73 714	+ 3.7%
Sweden	90 923	5 880	2 276	1 688	+ 34.8%
United_Kingdom	429 277	41 971	38 919	25 184	+ 54.5%
<b>Total number of cas</b>	<b>316 3538</b>	<b>18 8610</b>	<b>31 8536</b>	<b>26 7831</b>	<b>+ 18.9%</b>

\*Spain: Since 11 May, the frequency of reporting from regional level to national level has **changed**. This may lead to possible discrepancies in cases and death numbers due to data validation. This discrepancy could persist for several days. The cases reported in this table for Spain include cases from the previous 7 days with available data at the time of data collection.

\*\* Sweden: from week 38, the Swedish Public Health Agency update COVID-19 daily data four times per week on Tuesday–Friday. The cases reported in this table include cases from the previous 7 days with available data at the time of data collection.

\*\*\* Belgium, Spain and Sweden: Due to the reporting delay in Belgium, Spain and Sweden the 7-day period for these countries is provided with one day delay e.g. the period 27/08/2020-02/09/2020 should be read 26/08/2020-01/09/2020.

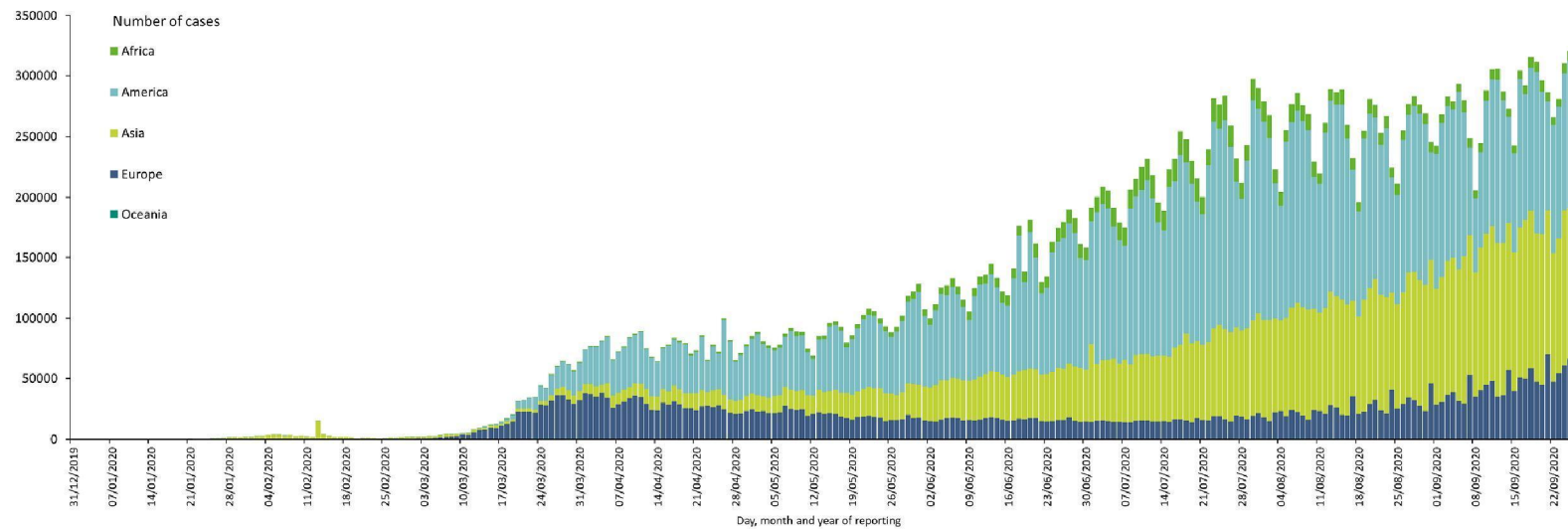
## Distribution of COVID-19 cases in accordance with the applied case definitions in the affected countries by country, America and Oceania, as of 27 September 2020



Places reporting cases	Sum of Cases	Sum of Deaths
<b>America</b>		
Anguilla	3	0
Antigua_and_Barbuda	101	3
Argentina	702 471	15 543
Aruba	3 832	25
Bahamas	3 790	87
Barbados	190	7
Belize	1 825	24
Bermuda	181	9
Bolivia	133 592	7 828
Bonaire, Saint Eustatius and Saba	85	1
Brazil	4 717 991	141 406
British_Virgin_Islands	71	1
Canada	151 671	9 262
Cayman_Islands	210	1
Chile	455 979	12 591
Colombia	806 038	25 296
Costa Rica	72 049	828
Cuba	5 412	120
Curaçao	337	1
Dominica	24	0
Dominican_Republic	110 957	2 093
Ecuador	133 981	11 273
El_Salvador	28 415	826
Falkland_Islands_(Malvinas)	13	0
Greenland	14	0
Grenada	24	0
Guatemala	89 702	3 213
Guyana	2 725	74
Haiti	8 723	227

Honduras	74 548	2 288
Jamaica	5 829	88
Mexico	726 431	76 243
Montserrat	13	1
Nicaragua	5 086	149
Panama	110 108	2 323
Paraguay	37 922	782
Peru	800 142	32 142
Puerto_Rico	45 413	642
Saint_Kitts_and_Nevis	19	0
Saint_Lucia	27	0
Saint_Vincent_and_the_Grenadines	64	0
Sint_Maarten	633	22
Suriname	4 831	102
Trinidad_and_Tobago	4 312	70
Turks_and_Caicos_islands	681	5
United_States_of_America	7 078 798	204 497
United_States_Virgin_Islands	1 317	19
Uruguay	1 998	47
Venezuela	71 940	600
<b>Oceania</b>		
Australia	27 016	870
Fiji	32	2
French_Polynesia	1 332	5
Guam	2 354	42
New_Caledonia	27	0
New_Zealand	1 477	25
Northern_Mariana_Islands	69	2
Papua_New_Guinea	532	7
<b>Total</b>	<b>16 433 357</b>	<b>551 712</b>

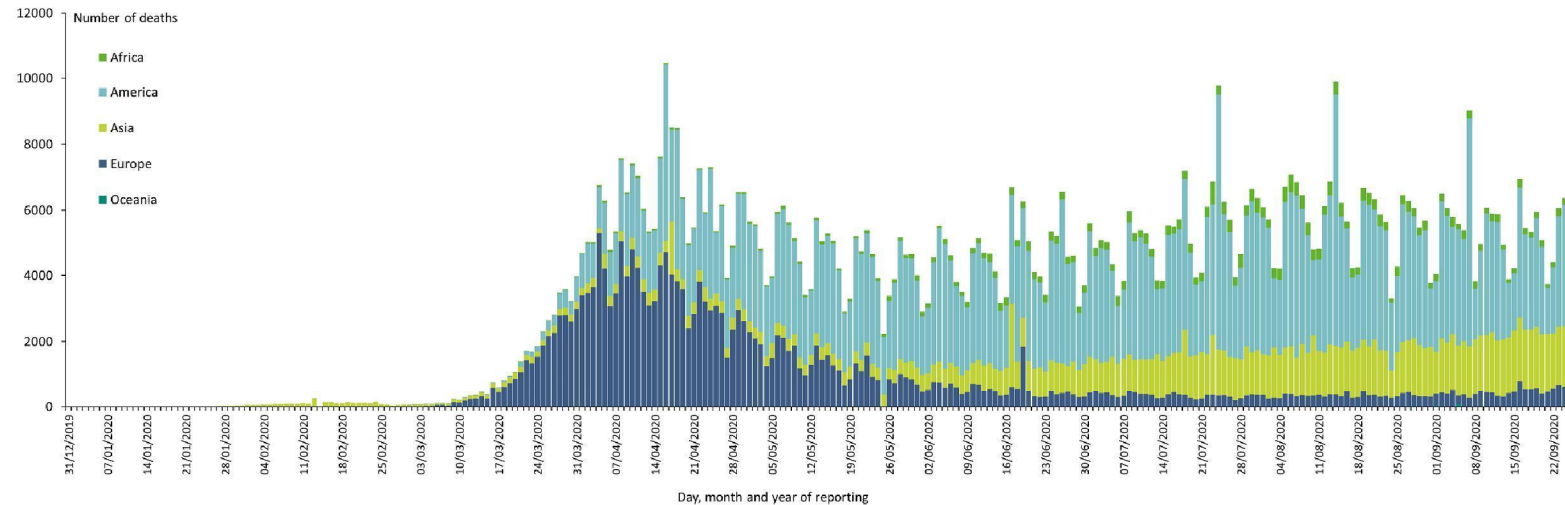
## Distribution of COVID-19 cases\* in accordance with the applied case definitions in the affected countries, as of 27 September 2020



\*Spain: Since 11 May, the frequency of reporting from regional level to national level has **changed**. This may lead to possible discrepancies in cases and death numbers due to data validation. This discrepancy could persist for several days. The cases reported in this table for Spain include cases from the previous 7 days with available data at the time of data collection. On 12 August 2020, Spain retro corrected the cumulative number of deaths leading to a negative increase of deaths.

\*Sweden: from end of August 2020, Swedish authorities are performing daily data consolidation leading to data retro-corrections. From week 38, the Swedish Public Health Agency will update COVID-19 daily data four times per week on Tuesday–Friday. This can result in a decrease of cumulative figures (cases or deaths) and related outputs.

## Distribution of COVID-19 deaths\* worldwide, as of 27 September 2020



\*According to media, the increase in deaths in Asia on 17 June is attributable to an increase in India as a result of a data reconciliation process in several states.  
<https://timesofindia.indiatimes.com/india/2k-more-covid-deaths-cases-rise-to-3-5-lakh/articleshow/76415524.cms>

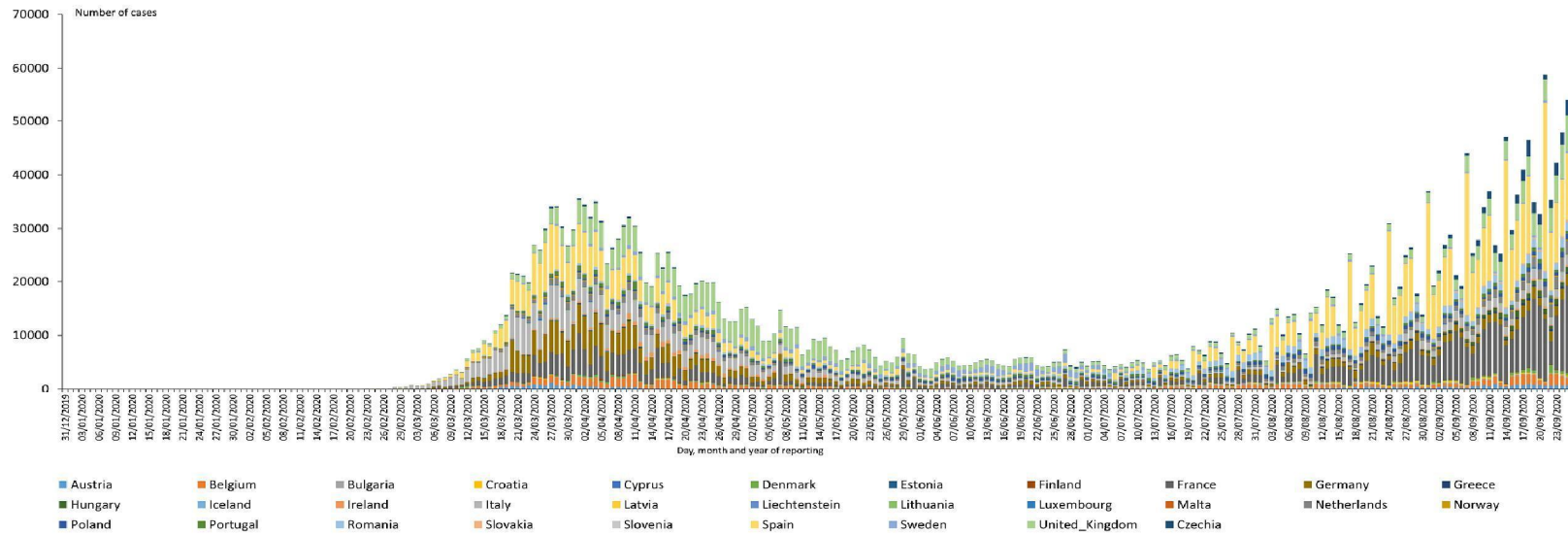
\*Spain: Since 11 May, the frequency of reporting from regional level to national level has **changed**. This may lead to possible discrepancies in cases and death numbers due to data validation. This discrepancy could persist for several days. The cases reported in this table for Spain include cases from the previous 7 days with available data at the time of data collection. On 12 August 2020, Spain retro corrected the cumulative number of deaths leading to a negative increase of deaths.

\*Sweden: from end of August 2020, Swedish authorities are performing daily data consolidation leading to data retro-corrections. From week 38, the Swedish Public Health Agency will update COVID-19 daily data four times per week on Tuesday–Friday. This can result in a decrease of cumulative figures (cases or deaths) and related outputs.

On 18 July, the increase in deaths is partly attributable to changes in the reporting system for **Chile** and **Kyrgyzstan**.

On 24 July, the increase in deaths is partly attributable to the inclusion of deaths by Peru (from March to the end of June) which were previously not reported.

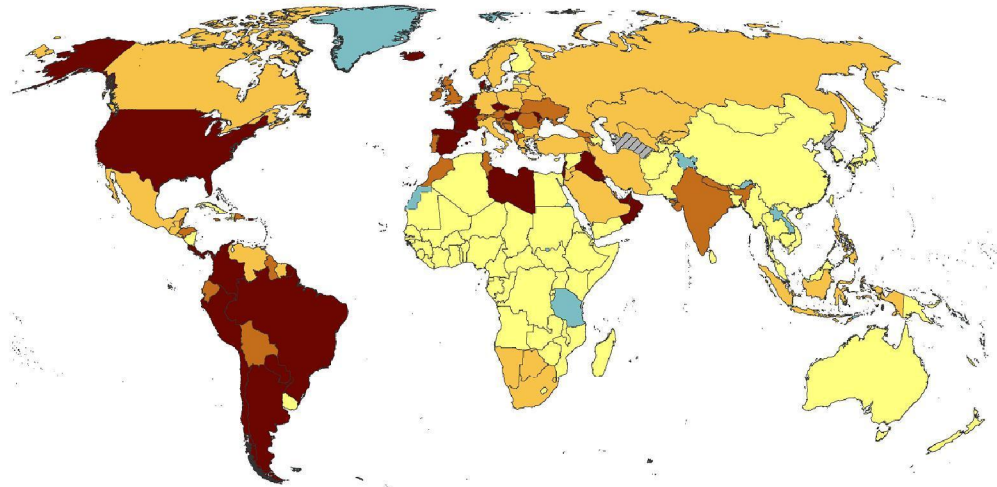
### Distribution of laboratory-confirmed cases\* of COVID-19 in EU/EEA and the UK, as of 27 September 2020



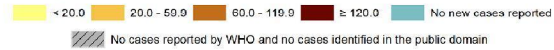
\*Spain: Since 11 May, the frequency of reporting from regional level to national level has **changed**. This may lead to possible discrepancies in cases and death numbers due to data validation. This discrepancy could persist for several days. The cases reported in this table for Spain include cases from the previous 7 days with available data at the time of data collection. On 12 August 2020, Spain retro corrected the cumulative number of deaths leading to a negative increase of deaths.

\*Sweden: from end of August 2020, Swedish authorities are performing daily data consolidation leading to data retro-corrections. From week 38, the Swedish Public Health Agency will update COVID-19 daily data four times per week on Tuesday–Friday. This can result in a decrease of cumulative figures (cases or deaths) and related outputs.

## Geographic distribution of 14-day cumulative number of reported COVID-19 cases per 100 000 population, worldwide, as of 27 September 2020



14-day COVID-19 case notification rate per 100 000, as of 27 of September, 2020

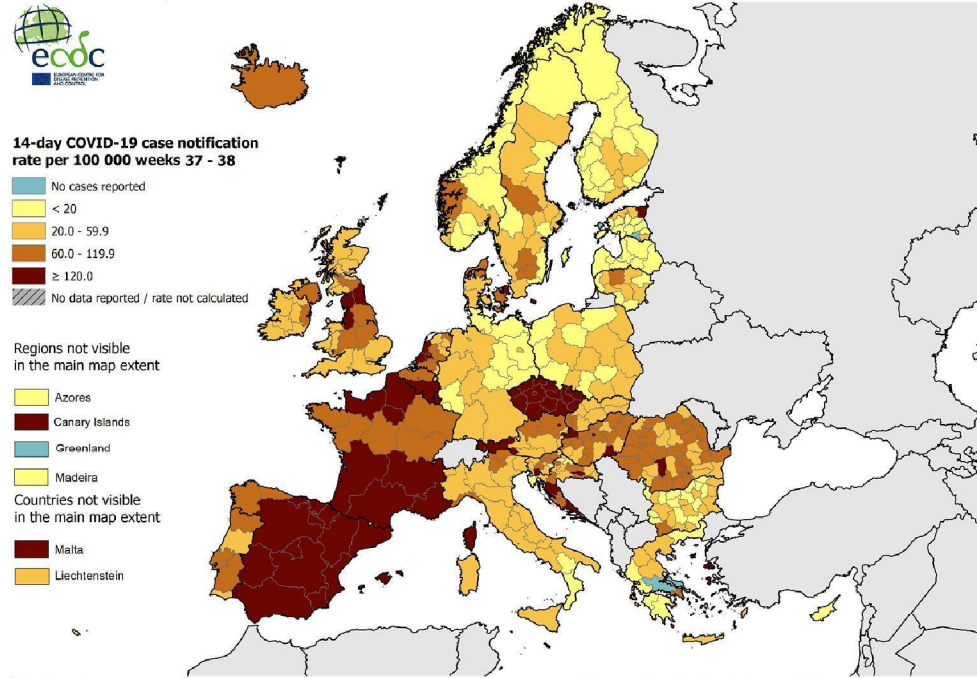


The boundaries and names shown on this map do not imply official endorsement or acceptance by the European Union.

Date of production: 27/09/2020

14-day notification rates and trends are collected using epidemic intelligence from various sources and are affected by the testing strategy, laboratory capacity and the effectiveness of surveillance systems. As all of these factors can differ greatly between countries, ECDC does not recommend using notification rates to directly compare countries. Particular caution is needed when interpreting reported rates from areas with small populations where small changes in numbers of reported cases can have a big impact on the notification rate. In addition, retrospective adjustment of data by reporting authorities is possible. Negative counts of new cases can arise if countries or subnational areas report cumulative totals that are lower than those reported previously, which can affect the presentation of data in maps and time-series plots.

## Geographic distribution of 14-day cumulative number of reported COVID-19 cases per 100 000 population, EU, EEA and the UK, as of 23 September 2020



Administrative boundaries: © EuroGeographics © UN-FAO © Turkstat, Office for National Statistics licensed under the Open Government Licence v.3.0. Contains OS data © Crown copyright and database right 2020. © Kartverket © Instituto Nacional de Estatística - Statistics Portugal. The boundaries and names shown on this map do not imply official endorsement or acceptance by the European Union. ECDC. Map produced on: 23 Sep 2020

14-day notification rates and trends are collected using epidemic intelligence from various sources and are affected by the testing strategy, laboratory capacity and the effectiveness of surveillance systems. As all of these factors can differ greatly between countries, ECDC does not recommend using notification rates to directly compare countries. Particular caution is needed when interpreting reported rates from areas with small populations where small changes in numbers of reported cases can have a big impact on the notification rate. In addition, retrospective adjustment of data by reporting authorities is possible. Negative counts of new cases can arise if countries or subnational areas report cumulative totals that are lower than those reported previously, which can affect the presentation of data in maps and time-series plots.